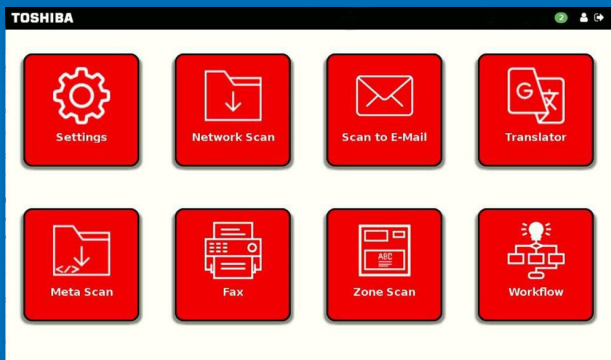


Straightforward and flexible realisation of customer requirements

Toshiba e-BRIDGE Next multifunction systems are the starting point in the optimisation and simplification of processes, with easy operation of systems a key factor for users.

With the powerful yet lean e-ScanFlow solution, we can connect Toshiba e-BRIDGE Next multifunction systems to smart solutions that can help to efficiently simplify your workflows.

Please get in touch!
We work with you to analyse your processes and propose a solution.



Customised and flexible solutions

e-ScanFlow is a flexible solution for document digitisation and undergoes constant development and innovation in response to dynamic market and customer requirements.

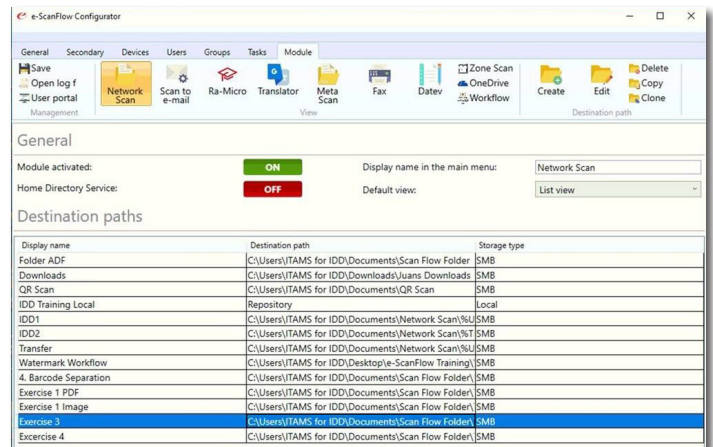
The e-ScanFlow and optional modules for function expansion and control of industry software have allowed us to realise a wide range of customer requirements.

Specific customer requirements realised with ease

We are open to your additional requirements and to control of the industry-specific software that you use. With e-ScanFlow, we can establish and develop connections to virtually all interfaces.

Easy administration

e-ScanFlow is quick and easy to configure using a configurator, and offers straightforward administration – whether the standard network scan or activation and installation of additional optional modules.





Standard functions and modules



e-ScanFlow is a powerful yet lean solution for document digitisation on Toshiba e-BRIDGE Next multifunction systems. The software comes with the standard network scan function and integrated user management, providing a range of options for quick and easy optimisation of scan workflows in companies and organisations. e-ScanFlow also features OCR functionality to help create searchable PDFs.

The standard functionality can be expanded with the addition of modules to meet specific customer requirements – e.g. the transfer of digitised documents to your industry solution or expansion of the Toshiba e-BRIDGE Next MFP with new functions.

RA Micro® connector (currently only available in Germany)

Paper-based documents are scanned with the Toshiba MFP and keyword indexed so that the digitised documents can be automatically stored in E archives in the RA-Micro® legal software.

DATEV® modul (currently only available in Germany)

Paper-based documents are scanned with the Toshiba multifunction system and keyword indexed so that the digitised documents can be automatically stored in the DATEV® document transfer module of DATEV online.

Fax modul

Faxes can be sent to any fax address. The scanned documents are spooled via the fax driver and then sent to a printer, which must have a Fax module. The address of the printer with the Fax module must be stored in the configurator.

Meta-Scan modul

In addition to the scan process, this module captures meta information entered by the user before starting the scan process (e.g. customer number or supplier). These additional data are processed according to a defined workflow.

Translation modul

Documents are digitised by the Toshiba MFP, translated into (virtually) any target language, and output as a copy.

Workflow modul

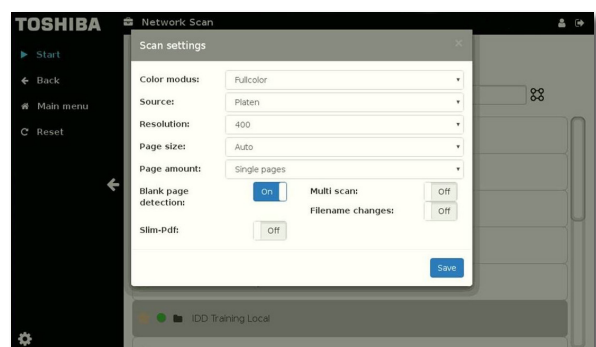
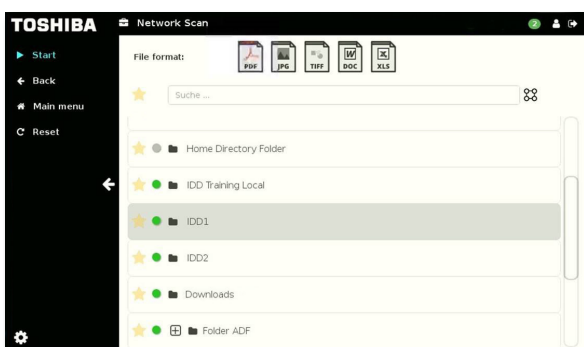
Module for direct connection of e-ScanFlow and e-FileWatcher. After digitisation of a document by e-ScanFlow, a data flow is transferred to e-FileWatcher for execution of a defined workflow.

OneDrive for Business

Seamless connection of the e-BRIDGE MFP with OneDrive storage in Office 365. This integration allows you to store digitised documents to OneDrive and print them at any time.

Secondary installation

This module can be used to configure any number of secondary installations for added flexibility in use of e-ScanFlow. Each secondary installation is a stand-alone e-ScanFlow instance that is installed on a server.





System requirements

Installation requirement	<ul style="list-style-type: none"> • .NET Framework 4.6.1
Minimum requirements	<ul style="list-style-type: none"> • CPU: Quad Core 2.0GHz¹⁾ • RAM: 4GB RAM • Hard Disk Drive: 40GB²⁾
Recommended	<ul style="list-style-type: none"> • CPU: Quad Core 2.0GHz • RAM: 8GB RAM • Hard Disk Drive: 80GB
Supported operating systems:	<ul style="list-style-type: none"> • Windows Server 2012 (64 Bit) • Windows Server 2016 (64 Bit) • Windows Server 2019 (64 Bit) • Windows 10/11³⁾

The number of multifunction systems integrated into e-ScanFlow is defined by entering the corresponding serial numbers.

¹⁾ The CPU power required can vary according to use of the modules.

²⁾ The Hard Disk Drive space required varies according to the number of documents stored.

³⁾ Not recommended due to strict limitations (maximum 20 parallel TCP connections).

In addition, the corresponding "Home" editions are not supported as operating systems for server computers.

For more information please contact us:

Toshiba Tec Germany Imaging Systems GmbH

Carl-Schurz-Str. 7
41460 Neuss
Germany

Telephone

+49 2131-1245-0

Fax

+49 2131-1245-402

Website

www.toshibatec.eu



Together Information is Toshiba's vision for how people and organisations create, record, share, manage and display ideas and data.

It is based on our belief that the most successful organisations are those that communicate information in the most efficient way.

We make that possible through an integrated portfolio of industry-specific solutions, all of which reflect Toshiba's commitment to the future of the planet.

